

eKO  WOOD

presents

EKOLOC G5

Content:

- 1.The New Locking System- Ekoloc G5
- 2.Comparison
- 3.Installation Method (step-by-step)
- 4.Fast Facts
- 5.FAQ

The New Locking System- Ekoloc 5G

From 2G to 5G

Ekowood International Berhad has been a Välinge licensee since 2002 utilizing the patented 2G locking system, which was known as the EKOLOC.

Now, Välinge and Ekowood have signed a global 5G license agreement which gives Ekowood the right to produce and sell the 5G Original. The developed fold down locking technology known in the market as **EKOLOC G5**.



EKOLOC G5

utilizes a technology that allows locking being automatically obtained during folding. The Flexible tongue bends in length direction and locks with snapping, which offers considerable advantages over other installation methods



Separate flexible tongue to enable installation in one single action. May be combined with all other locking systems.

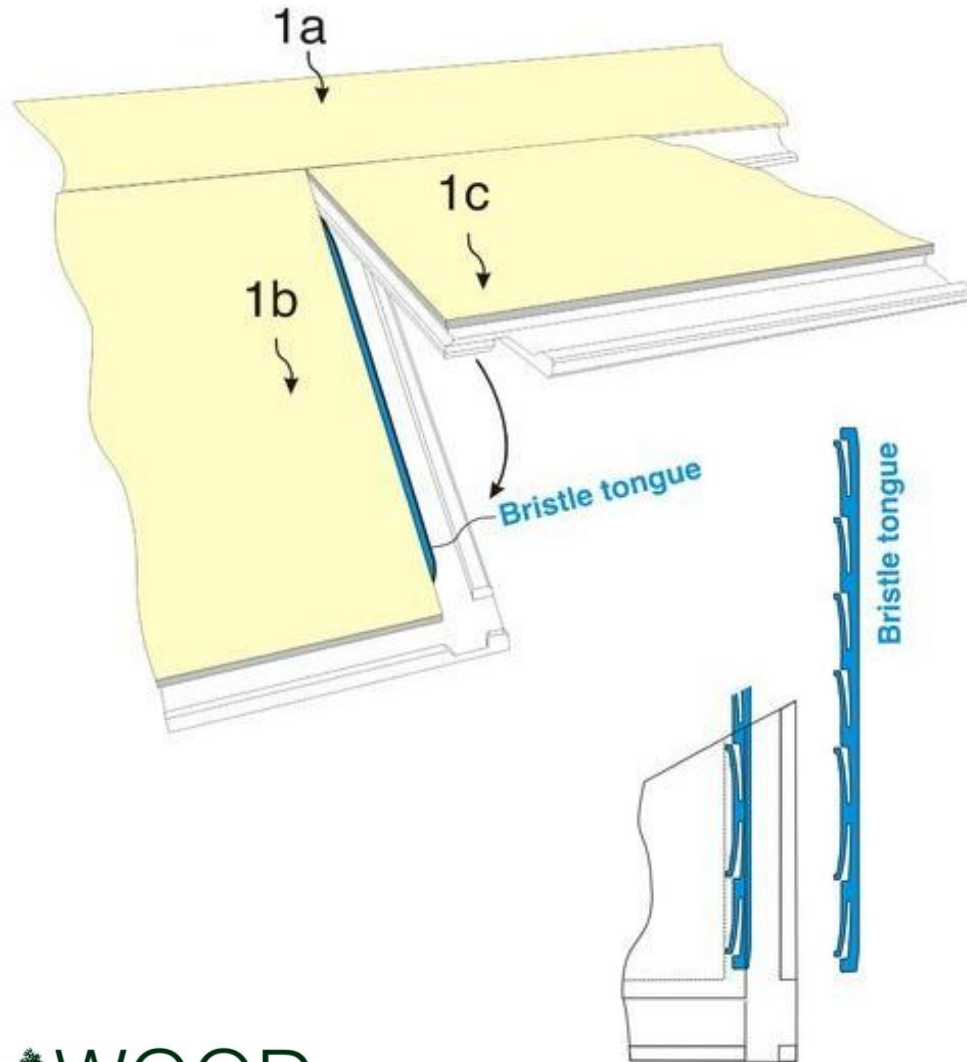


Enables installation in one single action and only required 1 manpower



Reduces installation time for all floorings.

How it works:



As Panel 1c is being folded down, the Bristle tongue will retract and immediately snaps back to lock Panel 1c to 1a and 1b

The locking is instant and occurs automatically with a click when the panel is folded down

The bristle tongue is designed with a rigid outer part and several flexible inner protrusions that create a pre tension locking. This feature is used to obtain a strong lock and to overcome production tolerances.



Comparison:

	Tongue & Groove	EKOLOC	EKOLOC G5
Man power	2	2	1
System	Floating or Glue-down	Floating or Glue-down	Floating or Glue-down
User-friendliness	Skill required on application of glue	Easy to install on Floating system	Easy to install on floating system
Adjustment	Adjustment cannot be done after glue is applied	Adjustments can be done on Floating system	Adjustments can be carried out easily on Floating system

Installation Method (step-by-step):

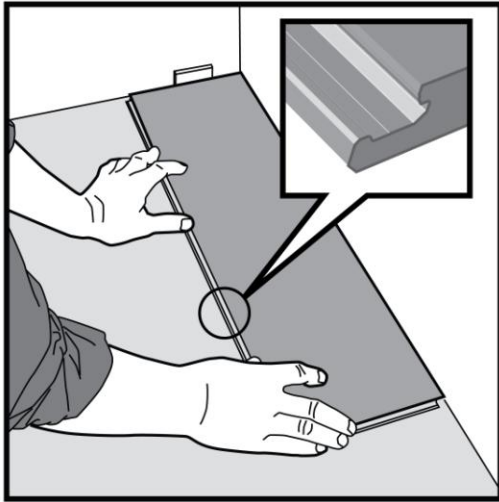


Fig 1.

First plank, first row.

Place a distance ca 10 mm thickness to the left.

and position the plank against the wall.

Later, after 3 rows, you can easily position the flooring against the front wall with distances ≈ 10 mm.

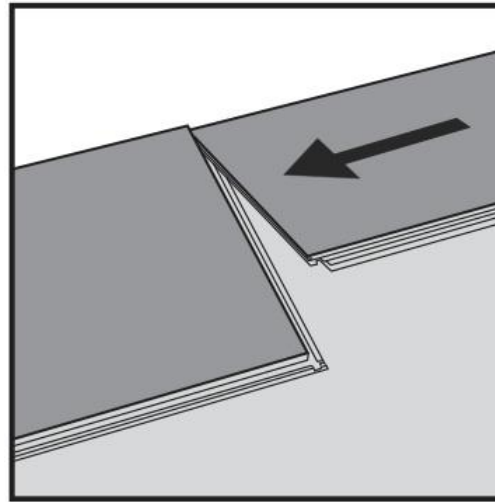


Fig 2.

Second plank, first row

Place this plank gently and tight to the short end of the first one.

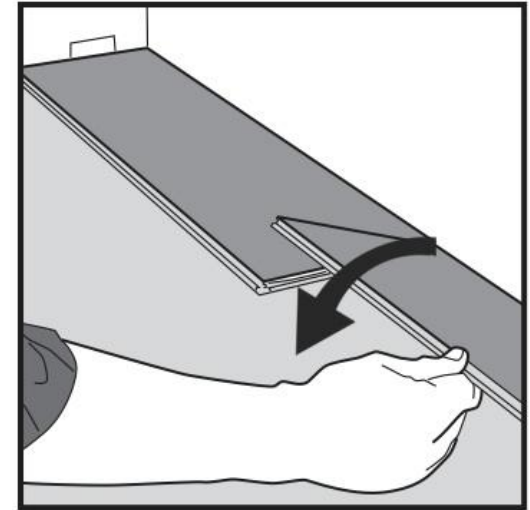


Fig 3.

Fold the panel down in a single action movement.

During the fold down, make sure the panels are tight against each other.

Afterwards press or slightly knock at the short end just installed.

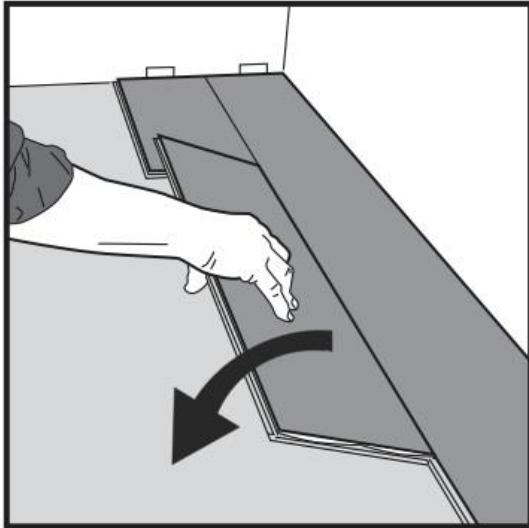


Fig 4.

Second plank, second row.

Repeat to fold the panel down in a single action movement. Place the panel **gently and tight** to the short end of the previous panel and fold it down in a single action movement.

During the fold down, make sure the panels are tight against each other.

Afterwards press or slightly knock at the short end just installed.

Disassembling (without tool)

Your floor can very easy be disassembled, which enables replacement during installation and also during use.

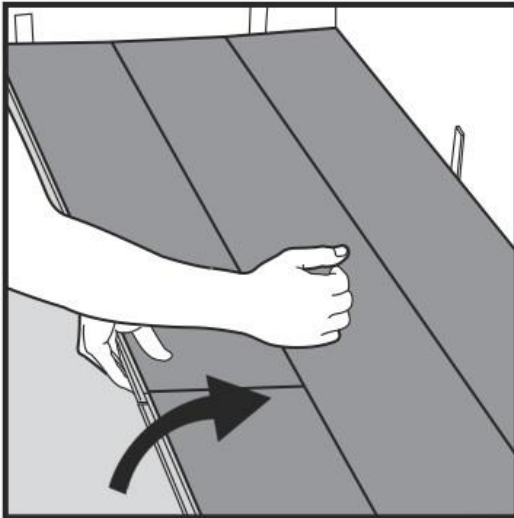


Fig 1.

Separate the whole row by carefully lifting up and slightly knocking just above the joint.

Fold up and release the whole longside.

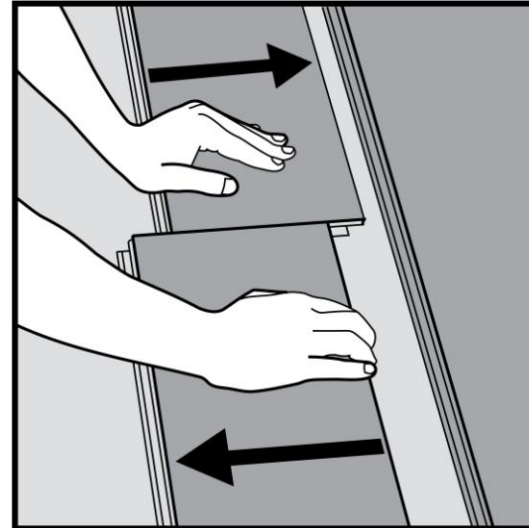


Fig 2.

Disassemble the panels by sliding horizontally.

(Do **not** fold up)

All done with only
single manpower

Fast Facts

Single Manpower

Suitable for Floating or
Glue-down system

Easy to make
adjustments

A close-up photograph of several stacked wooden planks, showing their natural grain and light brown color. The planks are arranged in a slightly overlapping manner, creating a sense of depth and texture. The lighting is soft and even, highlighting the natural beauty of the wood.

Frequent Asked Questions

Q1: Which are the advantages with Ekoloc G5?

A1: It is faster and more simple to install. You can install it by yourself. It is suitable for both floating or glue-downed system

Q2: Why is Ekoloc G5 faster and more simple to install?

A2: There are lesser steps in the installation process and less manpower is needed

Q3: Which floors will have the Ekoloc G5?

A3: In general, all 13.5 mm products in the Ekowood range will have the Ekoloc G5.

Q:4 Which are the advantages of Ekoloc G5 compared to the Ekoloc and the conventional Tongue and Groove system?

A4: You only need 1 manpower to install the Ekoloc G5 system, where Ekoloc and the conventional Tongue and Groove system would required at least 2 manpower.

The Ekoloc G5 is more user friendly and does not require special skills to install on a Floating system

Q5: Why is Ekowood changing joint construction?

A5: Ekowood is ever ready to offer floors with high quality and functionality. As part of this effort, Ekowood introduces innovations on a continuous basis to improve flooring features and installation methods.

Q6: Is flooring with Ekoloc system still in production?

A:6 Yes. Ekowood is providing more options for our customers with selection from Tongue and Groove system, to Ekoloc and Ekoloc G5.

Q7: Is there a risk that the locking tongue will break or be misplaced during transportation?

A7: No. The locking tongue is attached mechanically into the groove that is made to fit the locking tongue thickness so it cannot get out of position.

Q8: How do I know if the floor I have received is with Ekoloc G5 or with Ekoloc?

A8: Ekowood floors come with packaging design that indicates the system used if its Ekoloc G5, Ekoloc or Tongue and Groove.

Q9: How will the new joint and locking tongue be effected by climate variations?

A9: The Bristle Tongue of the Ekoloc G5 is made of plastic and has been tested in climate chamber. The result was that there are no negative impact on the joint due to climate variations.

Q10: Where do I find information about flooring installation with the new joint system?

A10: A laying instruction is delivered with the flooring packs and will inform about laying procedures.

Kindly contact our Sales Representative for detailed information

Q11: Has Ekoloc G5 been distributed widely in the market? Is there any feedback on the new system?

A11: Yes. Ekowood has successfully sold and installed flooring with Ekoloc G5 in Central Europe since April 2009. Customers are satisfied with the positive results.